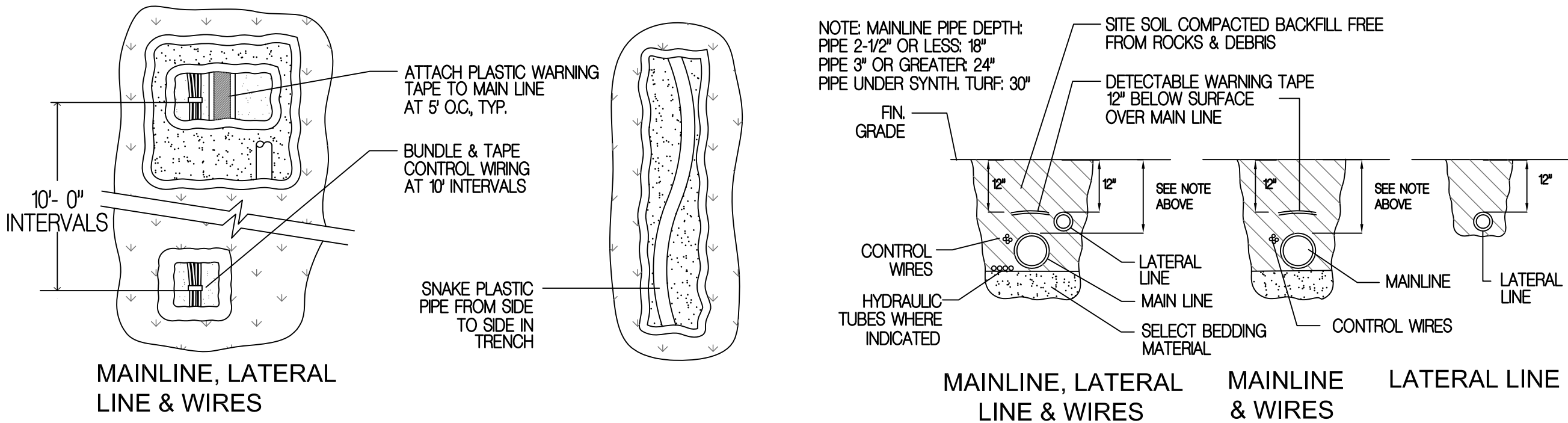


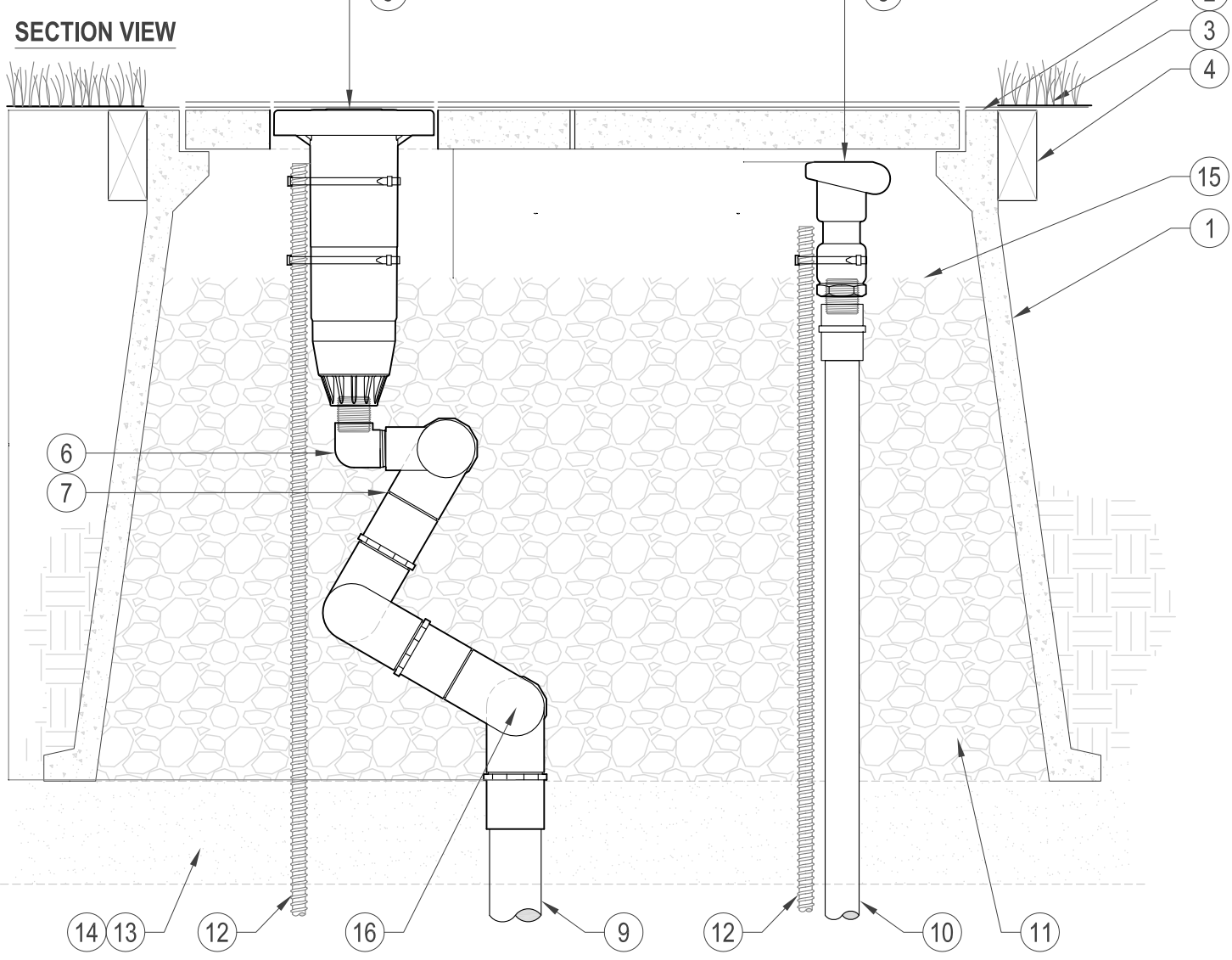
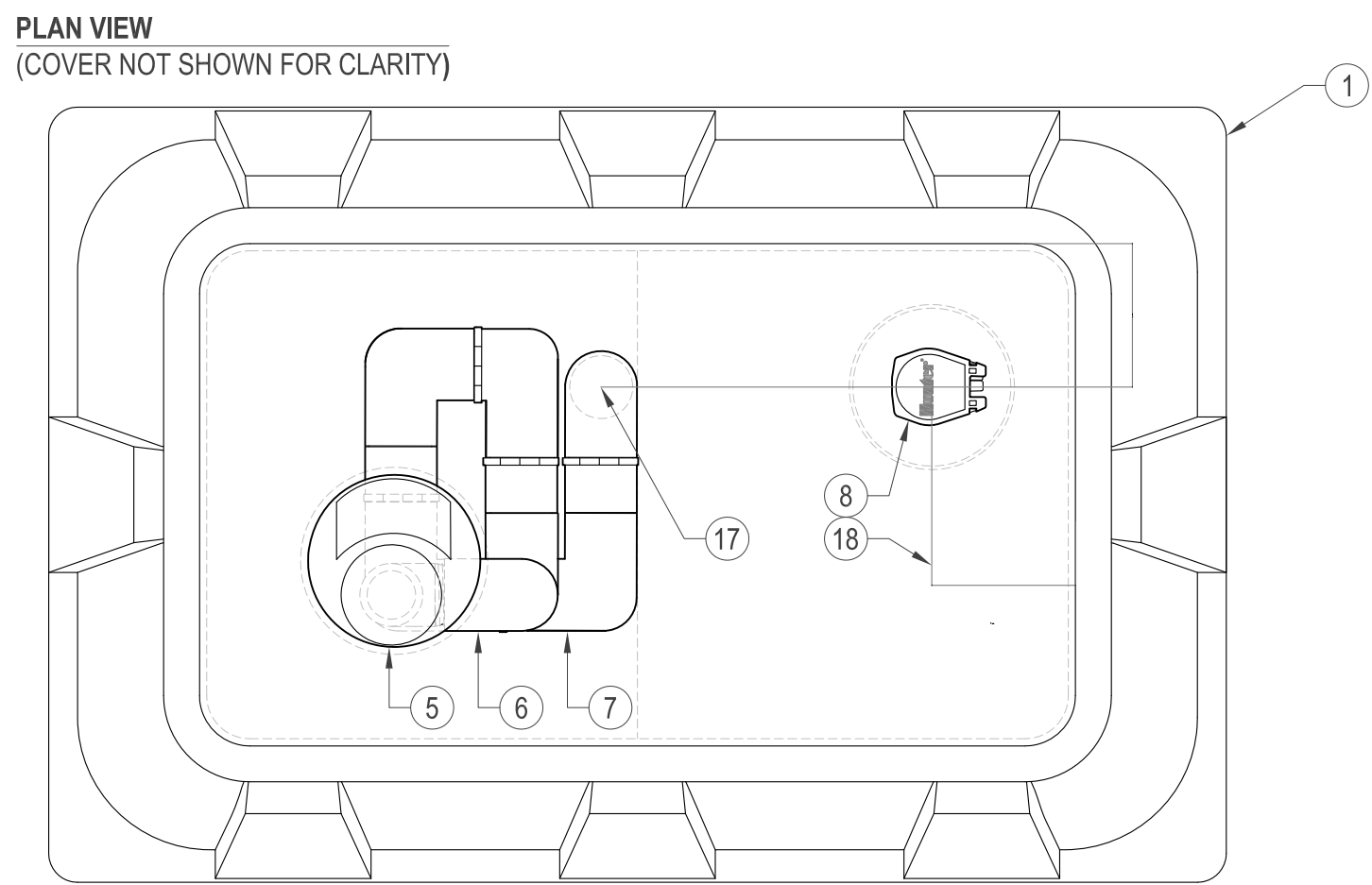
### PLAN NOTES:

- INDICATES EXISTING CONTROL VALVE TO BE REPLACED AND/OR RELOCATED
- INDICATES AREA OF EXISTING CONTROL ZONE SERVED BY REPLACED VALVE
- APPROXIMATE LOCATION OF TRANSITE LINE TO ABATED. ABATE ALL ENCOUNTERED TRANSITE LINE. REFER TO PROJECT ABATEMENT SPECIFICATIONS FOR ABATEMENT REQUIREMENTS.
- POINT OF CONNECTION FOR NEW 6" HIGH PRESSURE PVC MAIN LINE PROVIDING CONTINUATION OF SERVICE TO BASEBALL FIELD AND AREAS BEYOND PROJECT PROVIDE BEFORE ANY IRRIGATION DEMOLITION TO MAINTAIN CONTINUOUS IRRIGATION FOR AREAS OUTSIDE OF PROJECT
- POINT OF CONNECTION FOR CONTROL WIRES FROM EX CONTROLLER - VERIFY. CONTROL WIRES TO BASEBALL FIELD MUST BE REROUTED THROUGH PROJECT AS NOTED.
- DISREGARD ANY ENCOUNTERED HYDRAULIC CONTROL LINES AROUND FOOTBALL FIELD. HYDRAULIC CONTROL SYSTEM HAS BEEN ABANDONED AND IS NOT IN USE.
- NEW 4" HIGH PRESSURE PVC LINE AND SENSOR WIRE AND SLEEVE FROM PUMP TO POINT OF FUTURE CONNECTION TO SERVE FUTURE SYNTHETIC TURF BASEBALL FIELD COOL-DOWN SYSTEM
- NEW COACHES SWITCH CONTROLLER FOR FIELD COOL-DOWN
- NEW LANDSCAPE IRRIGATION TIMER/CONTROLLER FOR ALL EXISTING LANDSCAPING AROUND FOOTBALL FIELD.
- FLOW SENSOR CABLE AND MASTER VALVE CONTROL WIRES TO/FROM FOOTBALL FIELD COACHES SWITCH BY HOME FIELD HOUSE
- FLOW SENSOR CABLE AND MASTER VALVE CONTROL WIRES TO/FUTURE BASEBALL COACHES SWITCH IN SPLICE BOX BY BASEBALL FIELD
- FLOW SENSOR CABLE AND MASTER VALVE CONTROL WIRES TO/FROM LANDSCAPE TIMER/CONTROLLER FOR FLOW MONITORING
- QUICK COUPLE FOR STEEPLE CHASE PIT FILL TRACK SURFACING INSTALL
- QUICK COUPLE FOR SYNTHETIC TURF INSTALL
- VALVE BOX FOR TRACK SURFACING INSTALL. SEE CIVIL SHEET C501 FOR PIPING

SYMB.	DESCRIPTION	MANUFACTURER & MODEL	NOTES	DET.
	GEAR DRIVEN COOL DOWN ROTARY HEAD IN SYNTHETIC TURF SPECIALTY VAULT	HUNTER STG-900-73 ADJUSTABLE AGC W/HUNTER STK-1 REMOTE VALVE VAULT	12" RADIUS 32 GPM AT 120 PSI WITH HUNTER SYNTHETIC TURF VAULT AND 473900 RUBBER COVER	5 / TF232
NOT SHOWN	HIGH STRENGTH SWING JOINTS - FOR HEADS	HUNTER ST2008-VA SWING JOINT W/ 239800 & 239800 FITTINGS		5 / TF232
NOT SHOWN	HIGH STRENGTH SWING JOINTS - FOR QOVS	LASCO GBS-400		5 / TF232
	BRONZE BALL VALVE	NIBCO T-585-70 1-1/2" OR EQUAL FULL PORT		3 / TF232 2 / TF233
	NEW COOL-DOWN CONTROL VALVE	SUPERIOR 950	2-1/2"	3 / TF232
	NEW 24 VAC SOLENOID CONTROL VALVE	SUPERIOR 950	2"	3 / TF232
	QUICK COUPLER VALVE	RAINBRD 44		5 / TF232 5 / TF233
	EXISTING TRANSITE MAIN LINE - SIZE NOTED		SEE NOTE 1	
	HIGH PRESSURE MAINLINE	PVC CLASS 315 W/ DUCTILE IRON JOINTS		4 / TF232 2 / TF233
	LOW PRESSURE MAINLINE	PVC SCHEDULE 40 W/ SOLVENT WELD OR GASKETED JOINTS - STANDARD THRUST BLOCKING		4 / TF232
	NON-PRESSURE LATERAL LINE	PVC SCHEDULE 40 W/ SOLVENT WELD JOINTS		4 / TF232
	BRASS GATE VALVE	NIBCO T-193	LINE SIZE	2 / TF232
	COOL-DOWN CONTROLLER	*COACH'S SWITCH* BY IMPERIAL TECHNICAL SERVICES (CAG-TS2-6-1 MVR/PSR - PROVIDE WITH ITS FLOW-GUARD, FLOW SENSOR, AND M.V.	PEDESTAL MOUNT, KEY CONTROLLED 4 STATION SECURE INTERVAL TIMER	3 / TF233
	LANDSCAPE CONTROLLER	RAINMASTER EAGLE PINE 8 EG-SPEED 16 STATION WITH CENTRAL AND IMPERIAL TECH SERVICES W/PS MASTER VALVE VARIABLE TIMER POWER ASSEMBLY	IN SPEED PEDESTAL - PROVIDE WITH 5 YEAR H-CENTRAL CONTRACT	4 / TF233
	MASTER VALVE	SUPERIOR NORMALLY CLOSED		1 / TF232
	FLOW SENSOR	IRRITROL FS-B50 1-1/2" AND FS-B200 2" AS NOTED	USE EV-CAB-COM CABLE	1 / TF232
	IRRIGATION ONLY WATER METER	SEE SHEET C-501		C-501
	IRRIGATION BACKFLOW PREVENTER	SEE SHEET C-501		C-501
	IRRIGATION / COOL-DOWN BOOSTER PUMP	BARRETT ENGINEERED PUMPS SKD W/ ENCLOSURE BORDO-B-2-30VDF-15 HP - 480 VAC 3 PHASE VFD DUAL PRESSURE SET POINTS HP HIGH PRESSURE 10 PSI - LP LOW PRESSURE 80 PSI		1 / TF233
	CONTROL AND SENSOR WIRE SLEEVE	RIGID PVC SCH. 40 GRAY OR WHITE	SIZE NOTED ON PLAN	4 / TF232
	PIPE SLEEVE - LATERAL LINE	RIGID PVC SCH. 40	SIZE NOTED ON PLAN	4 / TF232
	PIPE SLEEVE - MAIN LINE	RIGID PVC SCH. 80	SIZE NOTED ON PLAN	4 / TF232



### TRENCHING DETAILS

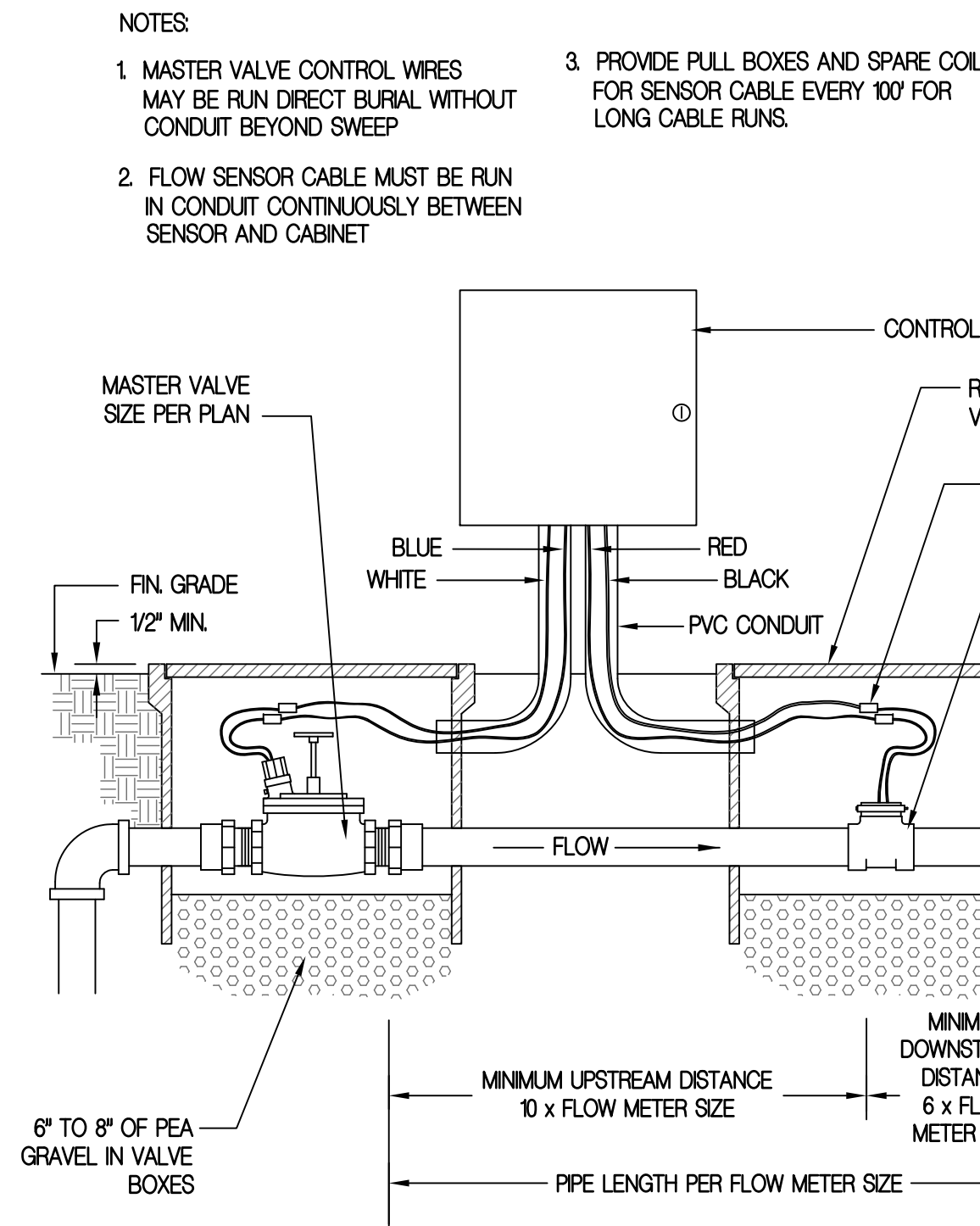


### FIELD COOL-DOWN HEAD AND QUICK COUPLER

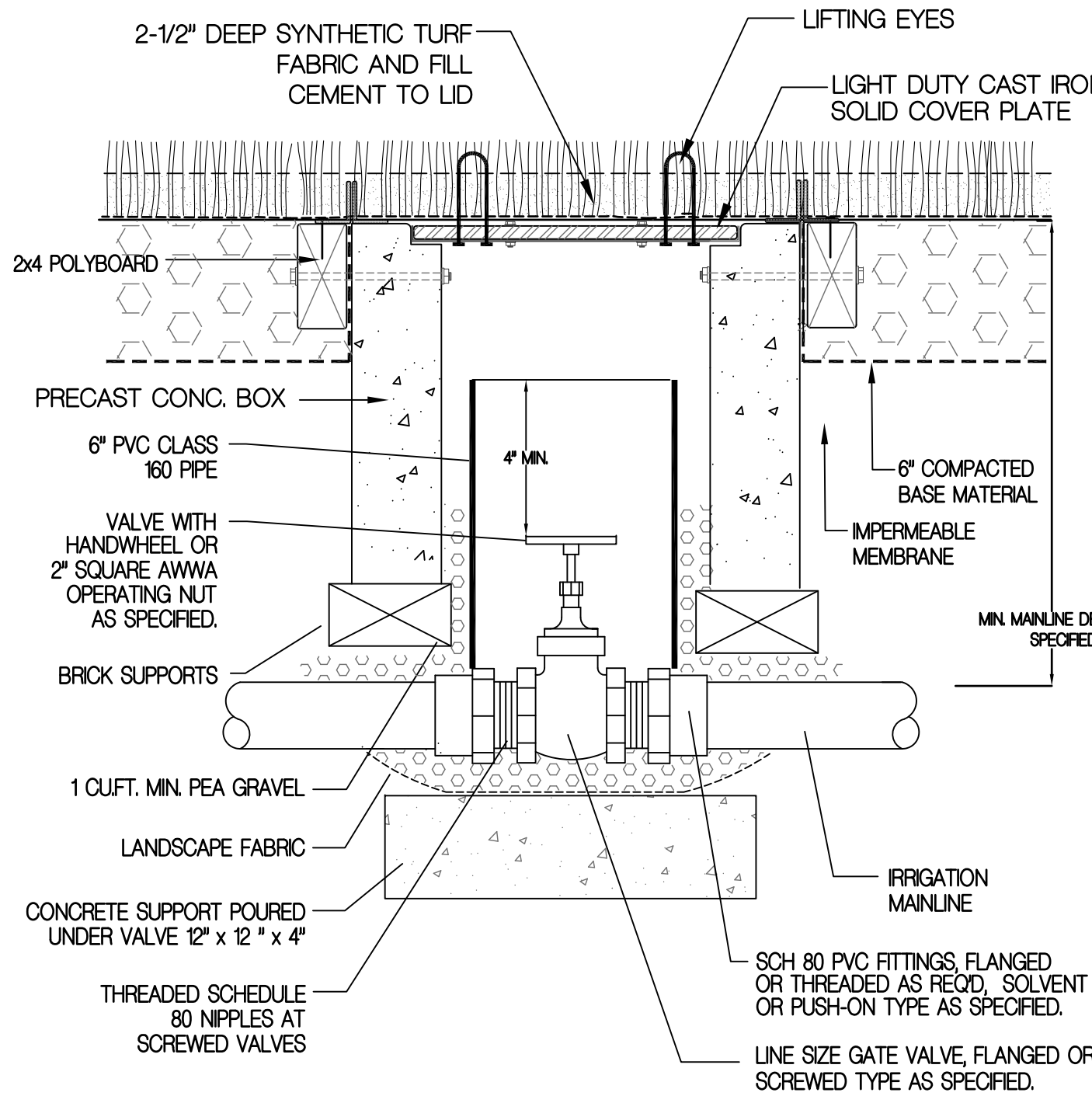
#### LEGEND

- HUNTER ST173026B" COMPOSITE BOX & 2-PIECE POLYMER-CONCRETE LID ASSEMBLY WITH CAST-IN OPENING TO SUPPORT ROTOR LATERAL THRUST PLUS CAST IN OPENING WITH CIRCULAR COVER FOR QUICK COUPLER ACCESS
- TRACK OR SURFACING GLUED TO COVERS (OR AS SPECIFIED)
- FINISHED GRADE SET TO FIELD PERIMETER TACK/GLUE BOARD OR AS SPECIFIED
- TACK/GLUE BOARD AS SPECIFIED (ALL SIDES)
- HUNTER STG-900 WITH RUBBER COVER KIT 473900 INSTALLED
- HUNTER 239800 & 239800 ROTOR ADAPTER FITTING WITH 3 ACME PIVOT POINTS
- HUNTER ST2008VA PREFABRICATED 2" SCH 80 PVC SWING JOINT WITH 6 ACME PIVOT POINTS TO PROVIDE MULTI-AXIS ARTICULATION AND ALIGNMENT OF ROTOR
- HUNTER HO5RC QUICK COUPLING VALVE
- LATERAL PIPING AND FITTINGS - 2" MINIMUM (OR AS SPECIFIED) FROM CONTROL VALVE TO ST2008VA SWING JOINT
- SCH 80 PVC RISER SUPPLY PIPING AND FITTINGS - 1" MINIMUM
- 3/4" MINUS WASHED GRAVEL
- 5/8" X 30" REBAR STAKE AND STAINLESS STEEL PIPE CLAMPS
- COMPACTED FIELD BASE MATERIAL AS SPECIFIED
- PROVIDE DRAINAGE VIA FIELD DRAINAGE SYSTEM
- GRAVEL LEVEL 5" BELOW UNDERSIDE OF ENCLOSURE COVER (TO BOTTOM OF ROTOR'S COMPARTMENT)
- ELEVATION OF SWING JOINT INLET - SET INLET AT SECOND PIVOT POINT ON SWING JOINT WITH BOTTOM OF ENCLOSURE PER SECTION VIEW DRAWING (28" BELOW ENCLOSURE TOP)
- LOCATION OF SWING JOINT INLET - SET INLET AT EDGE BETWEEN ENCLOSURE COVERS & LOCATE 5" FROM THE TOP OF COVER PER TOP PLAN VIEW DRAWING. INLET MUST NOT BE SET CLOSER TO ROTOR THAN SHOWN.
- LOCATION OF QUICK COUPLER INLET - MEASURE INLET PIPING LOCATION AT TOP RIGHT HAND CORNER OF ENCLOSURE - 5" FROM TOP EDGE AND 5" FROM SIDE EDGE.

\*ENCLOSURE DIMENSIONS  
2-PIECE COVER - 17" X 30"  
EXPOSED RIM - 20" X 33"  
OVERALL HEIGHT - 28"  
BASE PAD - 27" X 41"

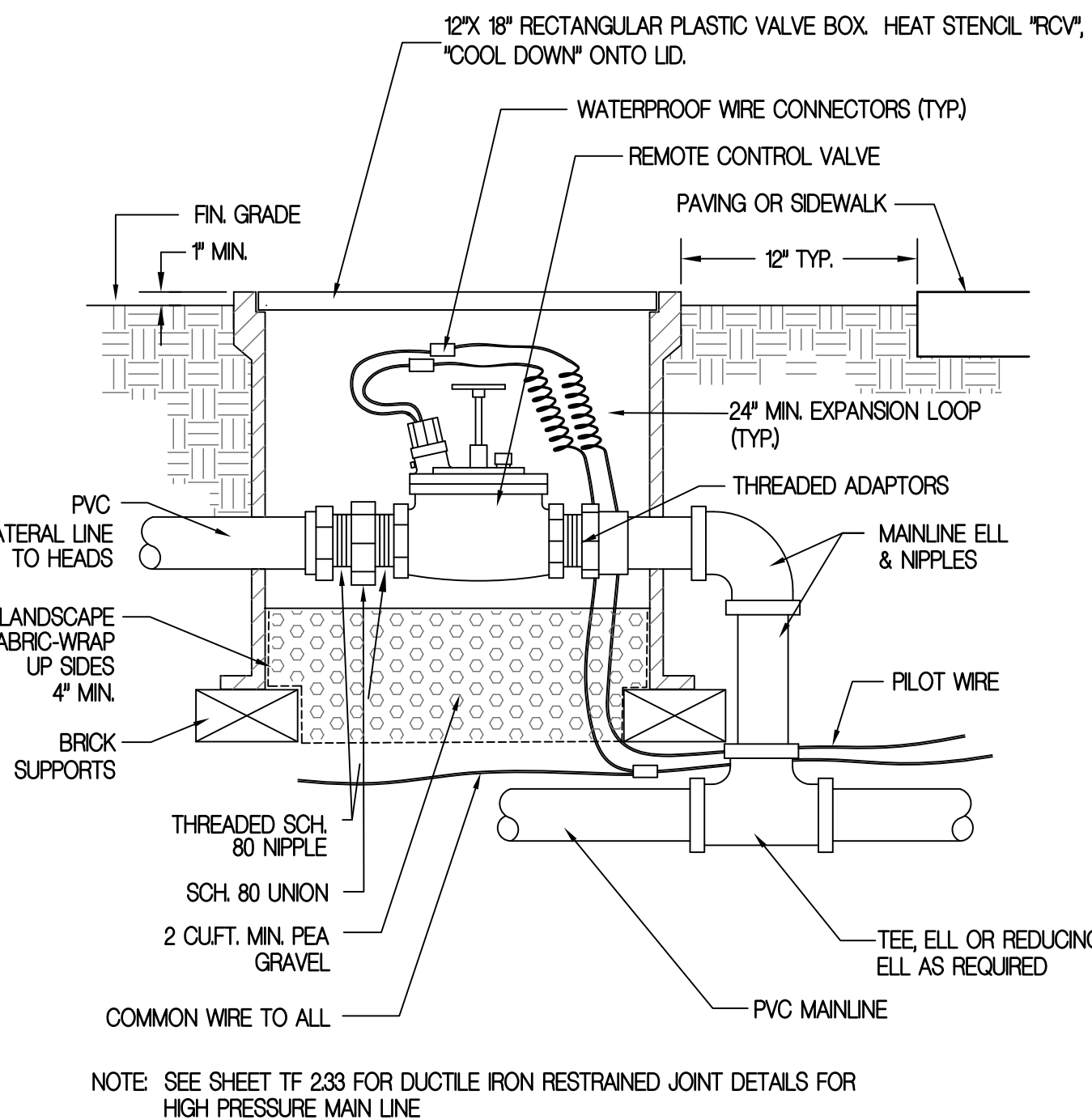


### FLOW SENSOR - MASTER VALVE



- INSTALL VALVE BOX AND PIPE EXTENSION AS REQUIRED TO ACHIEVE PROPER VALVE INSTALLATION AT MAIN LINE DEPTH.
- SEE SHEET TF 233 FOR DUCTILE IRON RESTRAINED JOINT DETAILS FOR HIGH PRESSURE MAIN LINE
- FOR INSTALLATION IN TRACK SURFACING OMIT POLYBOARD NAULERS AND LIFT EYES AND INSTALL RUBBER SURFACING ON LID

### MANUAL VALVE IN TRACK OR TURF

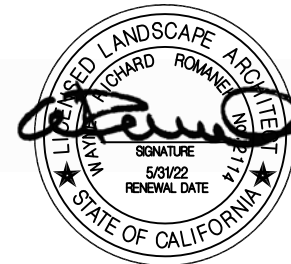


NOTE: SEE SHEET TF 233 FOR DUCTILE IRON RESTRAINED JOINT DETAILS FOR HIGH PRESSURE MAIN LINE

### CONTROL VALVE

#### REVISIONS

CONSULTANT  
CARTER, ROMANEK  
Landscape Architects, Inc.  
28720 Roadside Drive, Suite 100  
Agoura Hills, California 91301  
(818) 477-5800



NORWALK LA MIRADA UNIFIED SCHOOL DISTRICT  
LA MIRADA HIGH SCHOOL NEW FOOTBALL  
STADIUM PROJECT  
13520 ADELFA DRIVE, LA MIRADA, CA 90638

DSA # 03-120551

**NAC**  
ARCHITECTURE

NAC NO. 161-19015  
DATE: 12-10-2020

DSA BACKCHECK  
SUBMISSION

FIELD COOLING  
AND  
IRRIGATION  
UPGRADE PLAN

TF 2.32